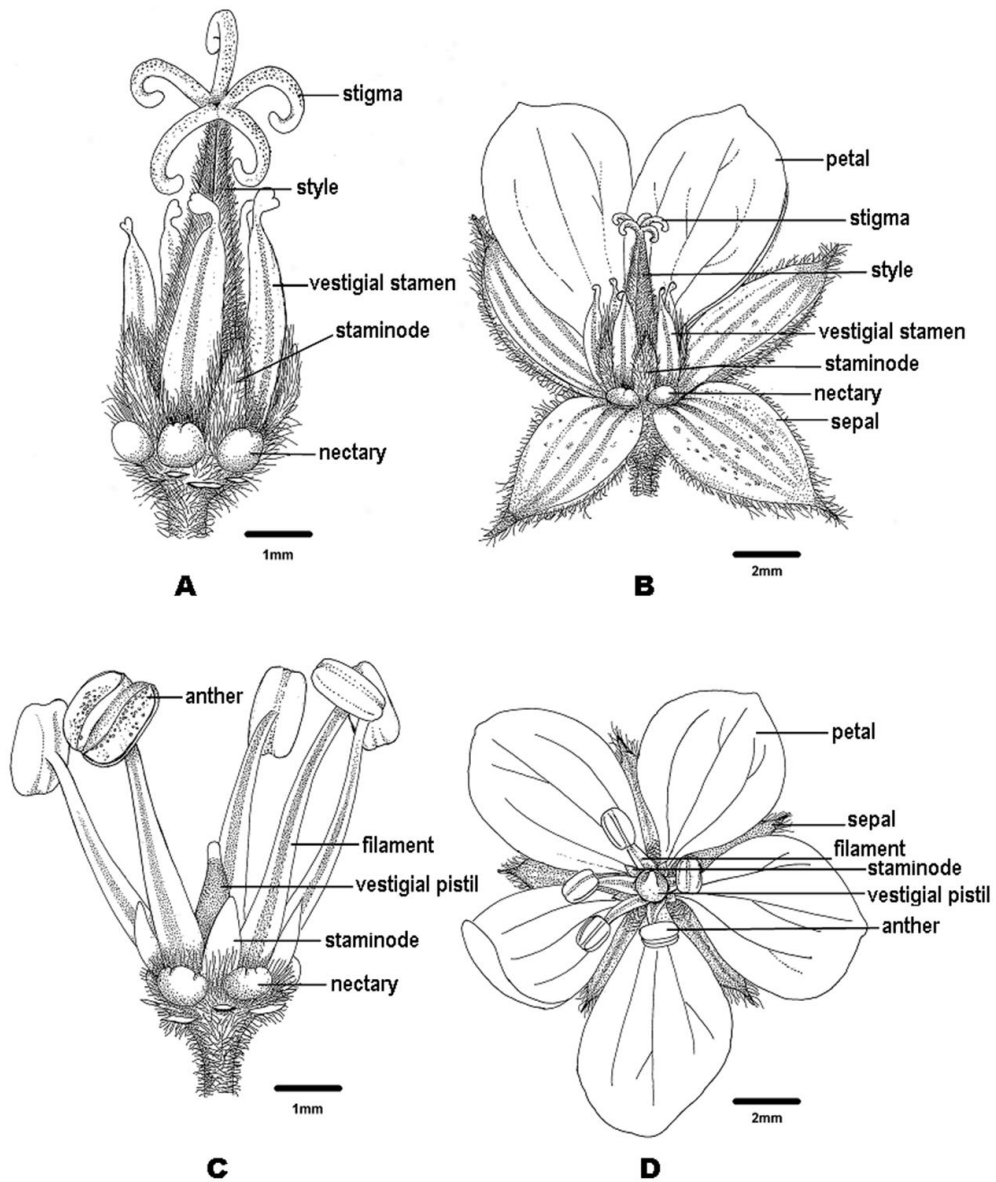




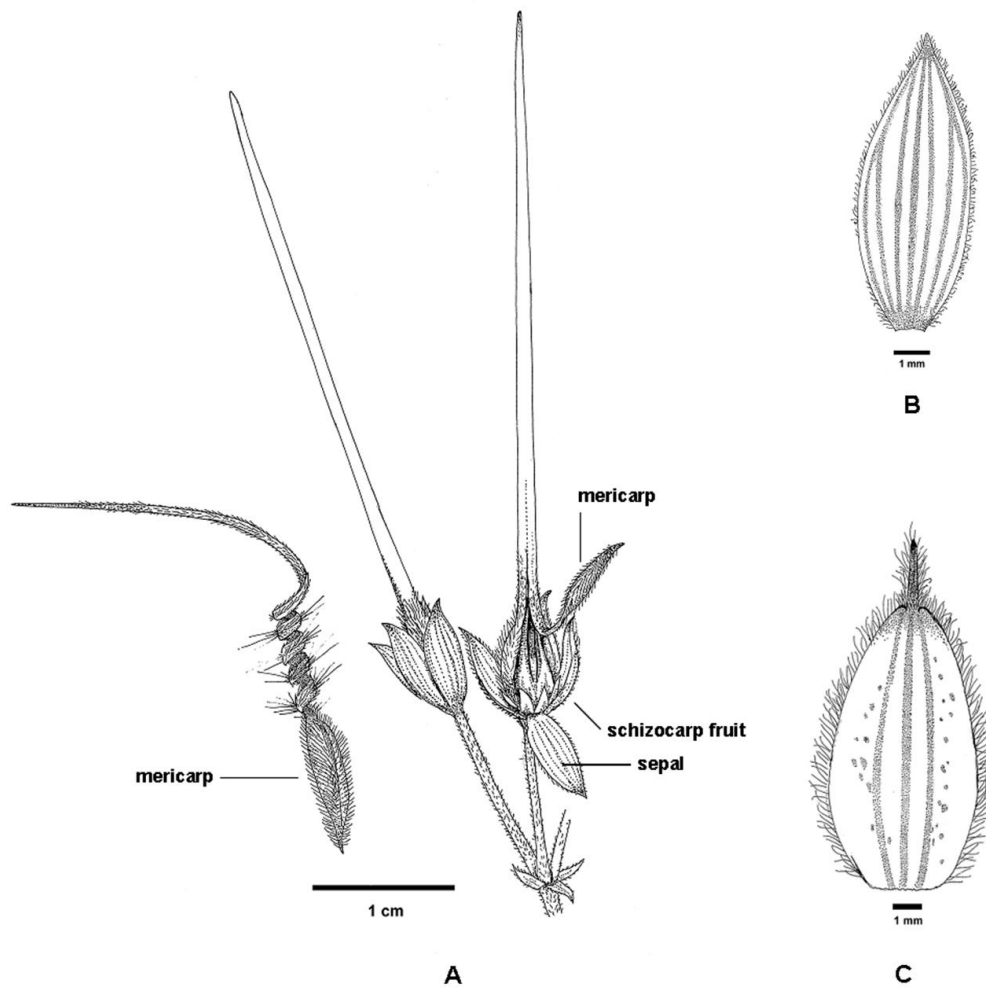
On-line Suppl. Fig. 1. Drawing of *Erodium somanum* female plant.



On-line Suppl. Fig. 2. Drawing of *Erodium somanum* male plant.



On-line Suppl. Fig. 3. Drawing of *Erodium somanum* reproductive parts: (A) Pistil and surrounding organs; (B) Female flower; (C) Stamens and surrounding organs; (D) Male flower.



On-line Suppl. Fig. 4. Drawings of *Erodium somanum* fruit (A) and sepals before (B) and after (C) fruit formation.