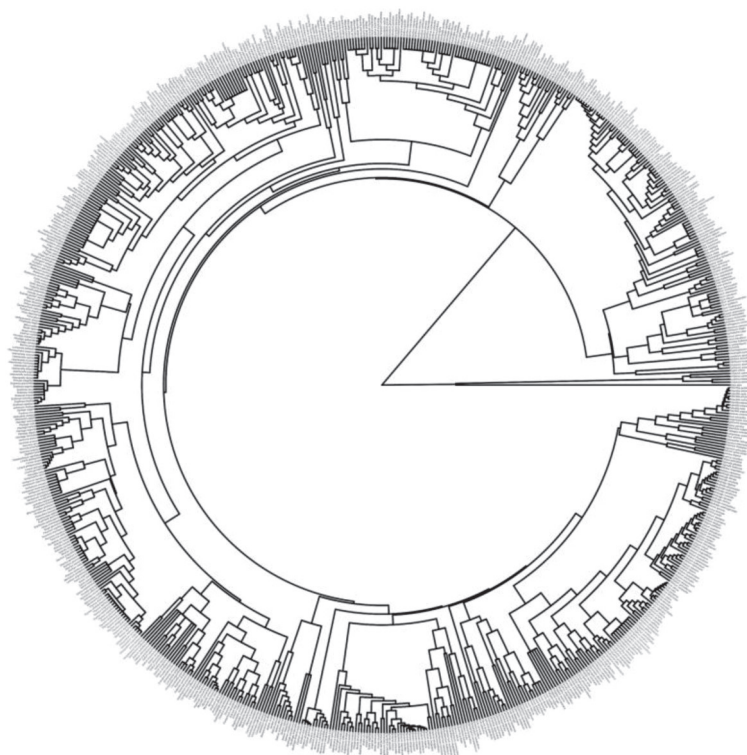


On-line Suppl. Tab. 1. Climatic variables extracted from WorldClim (Hijmans et al. 2005), their meaning, and whether they were related to minimum temperature, maximum temperature, or precipitation. In bold, the variables selected for the analyses.

Variable	Meaning	Minimum temperature (°C)	Maximum temperature (°C)	Precipitation (mm month ⁻¹)
Bio 1	Annual mean temperature (°C)	•	•	
Bio 2	Mean diurnal temperature range (°C)	•	•	
Bio 3	Isothermality (Bio 2 ÷ Bio 7)	•	•	
Bio 4	Temperature seasonality (CV)	•	•	
Bio 5	Max temperature of warmest month (°C)		•	
Bio 6	Min temperature of coldest month (°C)	•		
Bio 7	Temperature annual range (°C)	•	•	
Bio 8	Mean temperature of wettest quarter (°C)	•	•	•
Bio 9	Mean temperature of driest quarter (°C)	•	•	•
Bio 10	Mean temperature of warmest quarter (°C)	•	•	
Bio 11	Mean temperature of coldest quarter (°C)	•	•	
Bio 12	Annual precipitation (mm)			•
Bio 13	Precipitation of the wettest month (mm)			•
Bio 14	Precipitation of the driest month (mm)			•
Bio 15	Precipitation seasonality (CV)			•
Bio 16	Precipitation of wettest quarter (mm)			•
Bio 17	Precipitation of driest quarter (mm)			•
Bio 18	Precipitation of warmest quarter (mm)	•	•	•
Bio 19	Precipitation of coldest quarter (mm)	•	•	•

**On-line Suppl. Fig. 1.** Phylogenetic tree of the species sampled in Macedonian dry grasslands.